

WEST MANOR ELEMENTARY SCHOOL

Weekly Construction Progress Report
Week 04/12/2021-04/16/2021



Balfour Beatty

Current Activities 04/12/21-04/16/21

- Complete interior masonry at gymnasium.
- Continue air barrier at gymnasium.
- Start painting gymnasium exposed ceilings.
- Start final paint at renovation and prime/1st coat at gymnasium.
- Complete ground face CMU at West Gym elevation.
- Start ground face CMU at East Gym elevation.
- Continue gas piping installation on roof.
- Continue hang/tape/finish interior gymnasium walls.
- Continue storefront/glass installation at renovation.
- Continue installation of VCT.
- Continue installation of casework.
- Complete installation of new trees.
- Start hard ceiling and soffit metal framing at gymnasium.
- Complete installation of pendant lighting in renovation.
- Complete epoxy flooring at renovation.
- Start metal panel installation at renovation additions.
- Set HVAC roof top units at gymnasium and classroom addition.
- Start installation of plumbing fixtures.
- Complete installation of roof ladders at gymnasium.
- Complete brick and storefront admin openings.

Upcoming Activities 04/19/21-04/23/21

- Complete air barrier at gymnasium.
- Continue storefront/glass installation at renovation and gymnasium.
- Complete MEPF overhead rough-in at Gymnasium.
- Complete hard ceiling and soffit metal framing at gymnasium.
- Complete MEP OH inspections for in wall rough and hard ceilings.
- Continue final paint at renovation and prime/1st coat at gymnasium.
- Continue brick/ground face CMU at gymnasium/classroom addition.
- Complete gas piping on roof.
- Continue hang/tape/finish interior gymnasium walls.
- Continue installation of VCT.
- Continue installation of casework.
- Continue metal panel installation.
- Continue HVAC equipment start-up.
- Continue HVAC equipment connections for gymnasium/classroom addition.
- Start rubber base installation.



Balfour Beatty



Gymnasium Interior Progress



HVAC Equipment Set at Classroom Addition

Activities



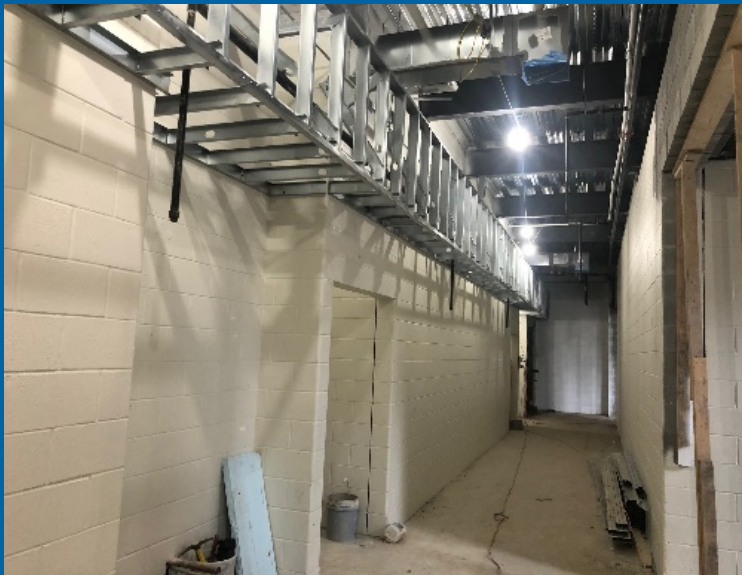
SW Wing Plumbing Fixture Installation



Cafeteria VCT



East Wing Casework



Lower-Level Gym Soffit Framing



Main Entrance Storefront and Metal Panels



Storefront/Glass and Brick at Admin.

Project Schedule

- Schedule Status: On Schedule



Project Financials

- Construction GMP: \$11,000,000
- Progress Billed to Date: \$5,614,603
- Budget Status: Within GMP

